

DESIGNER WALL TILES

EVERY WALL TELLS A STORY



YOUR FOREVER FLOORING

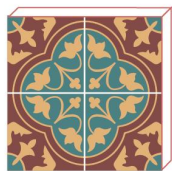


100YEARS



THE JOURNEY OF A 100 YEARS

1922



Pheroze and Rustom Sidhwa started a tile manufacturing unit called The Bharat Flooring Tile Company

1935



Bharat's floors jazz up Art Deco precincts across Mumbai

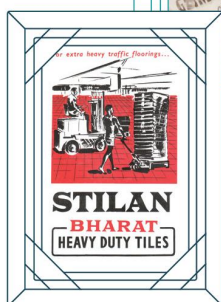
1940

Grindwell Abrasives is born



1980

Bharat's Stilan™ tiles in the Bombay Dyeing, Century and Khatau Makanji Mills. Bharat wins 7 contracts with the Tata group.



2005

Heritage Conservation: BFT restores the Salar Jung Museum, Hyderabad and then the Bhau Daji Lad Museum, Mumbai which won a UNESCO Award for Cultural heritage conservation in 2005

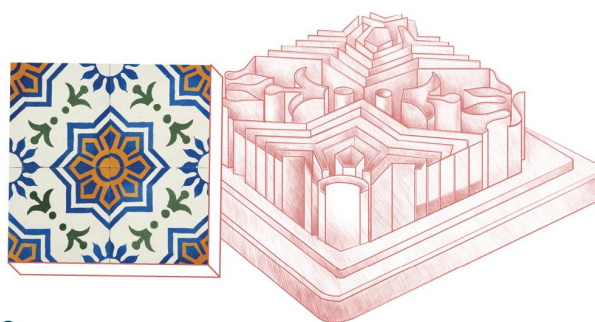


2013

Winning the UNESCO award for the Royal Bombay Yacht Club

2022

Completes 100 Years and gears up for the next one with an assortment of home decor, called the BFT Home.



1930

Bharat Tiles found their way into the Bombay Central Railway station, Royal Mint, Universities, and even the Governors' houses

1937

Bharat's Indian and Italian Marbles in swadeshi banks and insurance companies



1960

The debut of Stilan™ heavy duty tile for Industries



1999

Dusting off its original molds from the 1920s and rediscovering its original catalogues, Bharat's Heritage™ range was relaunched in 1999 at the Kala Ghoda Arts Festival, Mumbai.

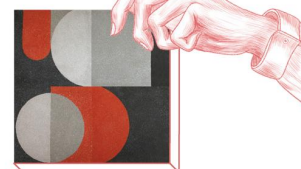
2010

Reviving the craft of in-situ floors



2014 onwards

BFT pioneers collaborations with top design talent for fresh tile collections spanning the next decade



And the journey continues...

TILE PATTERN

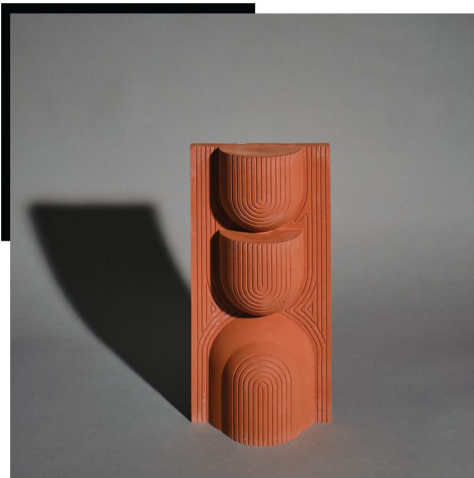
SOFT BRUTALISM

{WALL CLADDINGS}

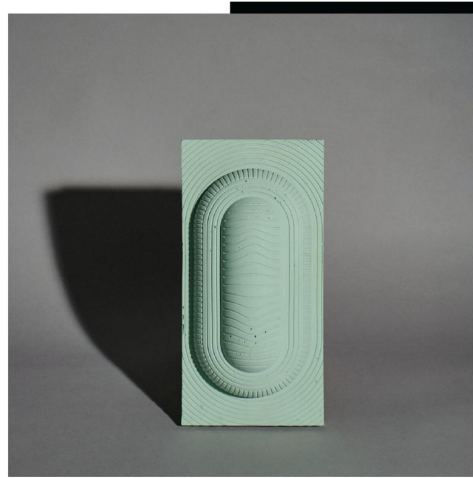
In Collaboration with Ashwin Mallya

PART OF BFT'S PRODUCT RANGE, THIS SERIES FEATURES BOLD, INTRICATE WALL CLADDING FORMS DESIGNED TO ENHANCE SURFACES WITH BOTH FUNCTION AND AESTHETIC APPEAL.

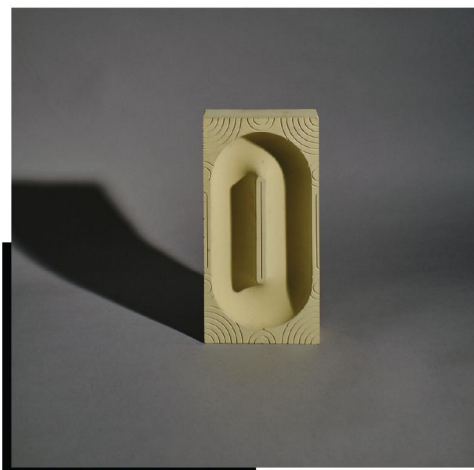
This project reimagines classic Brutalism by softening concrete forms with rounded edges, challenging perceptions of weight, texture, and surface. Inspired by post-war architecture from India, Britain, Japan, and the Soviet Union, it explores concrete's expressive potential through interior and exterior objects. In collaboration with wall cladding manufacturers, new moulding techniques and capsule-shaped forms were developed, echoing iconic Brutalist motifs in a contemporary context.



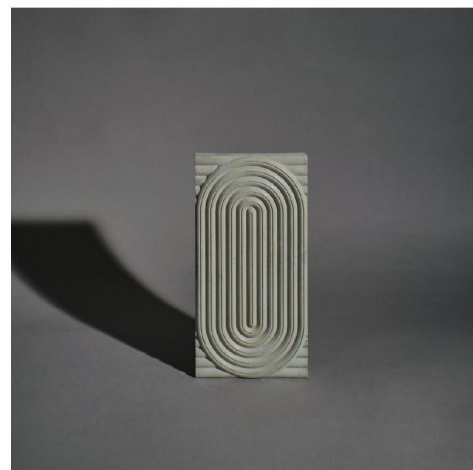
Block 3



Block 4



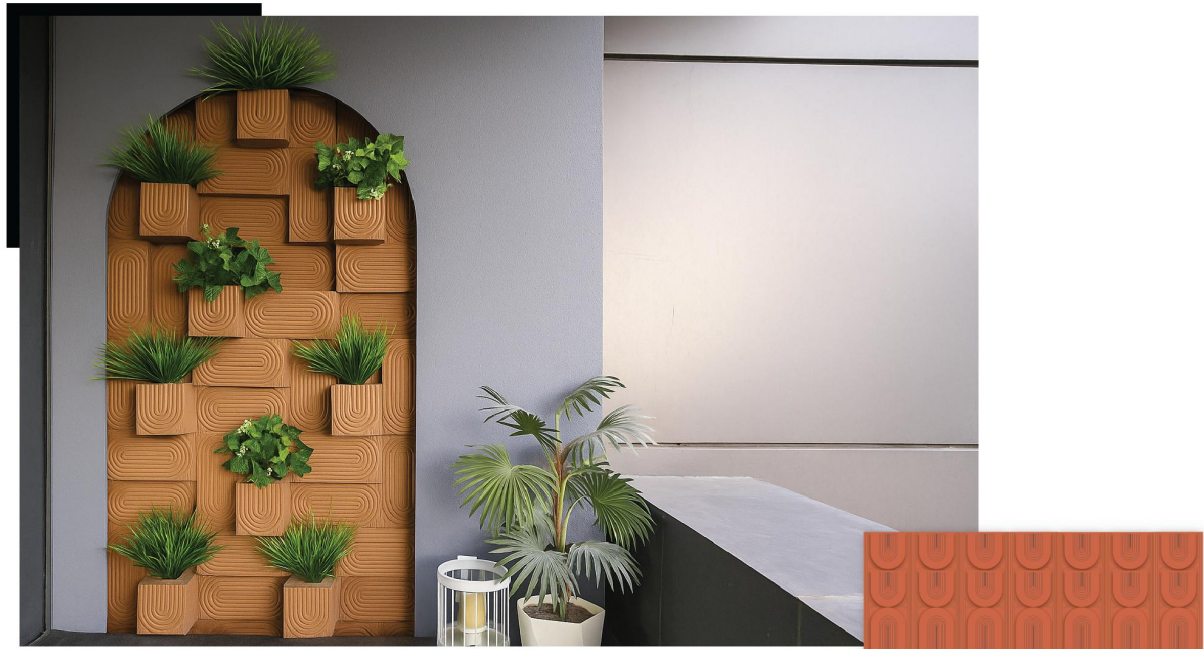
Block 7



Block 11

SOFT BRUTALISM

BLOCK 3



Sizes: 300mm x 150mm (12in x 6in) | Thickness: Cladding - 60mm
Material: Topping - Cement, pigment, filler | Colour : Deep Red

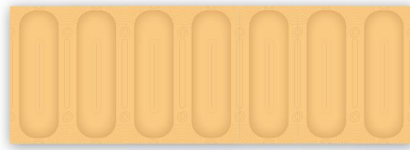
BLOCK 4



Sizes: 300mm x 150mm (12in x 6in) | Thickness: Cladding - 60mm
Material: Topping - Cement, pigment, filler | Colour : Grey

SOFT BRUTALISM

BLOCK 7



Sizes: 300mm x 150mm (12in x 6in)
Thickness: Cladding - 45mm
Material: Topping - Cement, pigment, filler
Colour: Jaisalmer Yellow

BLOCK 11



Sizes: 300mm x 150mm (12in x 6in)
Thickness: Cladding - 45mm
Material: Topping - Cement, pigment, filler
Colour: Mint Green

TILE PATTERN

CONTOURSCAPE COLLECTION

{WALL CLADDINGS}

In Collaboration With Rat [Lab]

THIS COLLECTION SERVES AS A TRIBUTE TO THE NUANCED BEAUTY FOUND IN THE INTERPLAY OF LINEAR INTERSECTIONS AND THE GRACEFUL CURVES THAT DEFINE THE EVER-CHANGING LANDSCAPES OF LIFE.

Contourscape blends the structure of linear symmetry with the softness of curves, reflecting the balance between stability and transformation. This collection celebrates the harmony between tradition and modernity, offering a serene space that evolves with you.

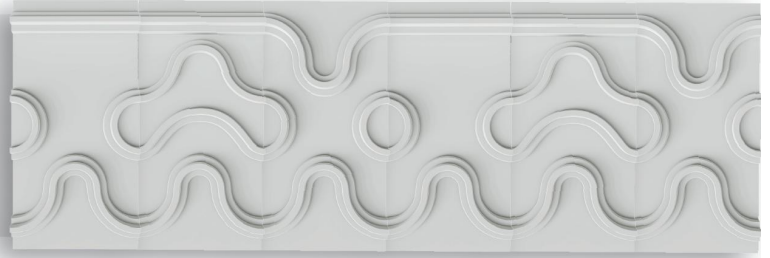
Each tile tells a story—of movement, continuity, and the beauty found in life's transitions.



Sizes: 30cm x 15cm

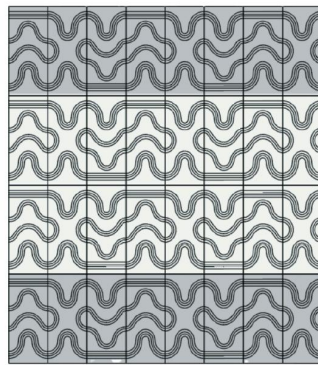
Pattern: Vortex Type A, B,C, Colours: Mushroom

VORTEX



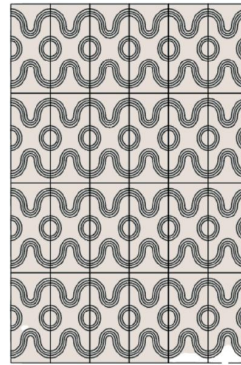
INTRODUCING THE "VORTEX", WHERE DESIGN TRANSCENDS INTO A SWIRLING MASS OF DYNAMIC AND SPIRALING FLOW. EACH TILE IN THIS COLLECTION IS A TESTAMENT TO THE CAPTIVATING BEAUTY FOUND IN THE SEAMLESS CONVERGENCE OF ELEGANCE AND SWEEPING CURVES.

The "Vortex" collection celebrates the beauty found in simplicity, where gentle curves become brushstrokes within a vast canvas of design possibilities. Arrange the tiles in various configurations to unveil a myriad of expressions, each narrating a unique visual story that beckons individuals to shape their surroundings.



GREY

LIGHT SILVER



SILICA



Sizes: 30cm x 15cm

Pattern: Vortex Type B, Colours: Sea Blue

THE VISUALIZATIONS



Sizes: 30cm x 15cm
Pattern: Vortex Type C, Colours: Fawn



Sizes: 30cm x 15cm
Pattern: Vortex Type B, Colours: Peach & Fawn

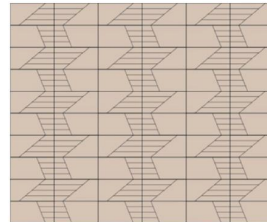
VEXEL

INTRODUCING THE "VEXEL", WHERE THE MARRIAGE OF PRECISION AND ORGANIC CHARM UNFOLDS IN A VISUAL SYMPHONY.

"Voxel" derives its name from the artful combination of vectors and pixels, creating a design language that blurs the boundaries between the digital and the organic. Each tile is a canvas of possibilities, adorned with straightforward linear patterns that effortlessly interlock, drawing inspiration from the refined simplicity found in traditional geometric motifs.



LIGHT CREAM



SILICA

THE VISUALIZATIONS



Sizes: 30cm x 15cm

Pattern: Voxel Type A, Colours: Mushroom & Sicilia

THE VISUALIZATIONS



Sizes: 30cm x 15cm

Pattern: Voxel Type A, B, Colours: Light Silver Grey, Silver Grey, Grey



Sizes: 30cm x 15cm

Pattern: Voxel Type A, B, Colours: Peach

TILE PATTERN

SHUNYA-TAAL

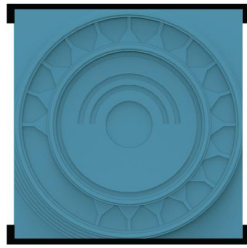
{WALL CLADDINGS}

Design Collaboration: HCPID x BFT

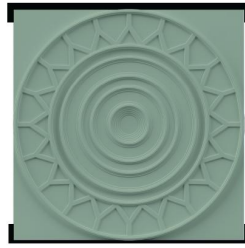
PATTERNS THAT SPEAK, RHYTHMS THAT RESONATE

The Shunya Taal collection is a tribute to the rich cultural heritage of India, expressed through the timeless symbols of Shunya and Taal. Shunya, representing the concept of zero and completeness, is reflected in the minimalist yet profound design of the tiles. Taal, symbolizing rhythm and movement, is captured in the dynamic patterns and textures. Together, these elements create a range that is both grounded in tradition and forward-thinking, offering a versatile and stylish solution for diverse interior applications.

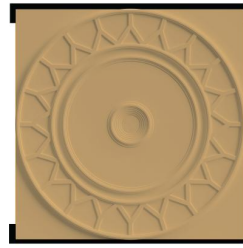




TILE 01 (Dha)



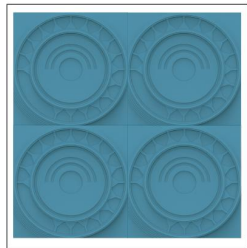
TILE 02 (Gee)



TILE 03 (Tin)

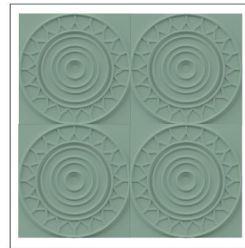


TILE 04 (Taa)



Also Available In -

-  Light Silver Grey
-  Light Cream



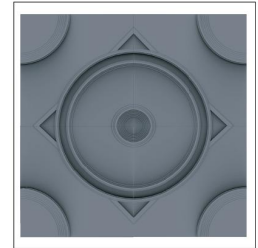
Also Available In -

-  Light Silver Grey
-  Light Cream



Also Available In -

-  Light Silver Grey
-  Light Cream



Also Available In -

-  Light Silver Grey
-  Light Cream



A Set of 4 tiles to make the Shunya - Taal tile pattern
Size of each tile- 200mm x 200mm

THE VISUALIZATIONS



Sizes: 200mm x 200mm

Pattern: Tile 02 (Gee) , Tile 03 (Tin), Colours: Sea Blue



Sizes: 200mm x 200mm

Pattern: Tile 02 (Gee),Tile 03 (Tin), Colours: Light Cream

TILE PATTERN

HEXAR

{WALL CLADDINGS}

3D Wall Cladding Inspired by Weaves

Inspired by the pattern created with cross-stitching threads and the timeless beauty of woven textures, we have designed the Hexar 3D wall claddings to bring depth, detail, and dimension to modern interiors. Blending traditional craftsmanship with contemporary design, each panel tells a story through form and texture.



TILE PATTERN

TURKISH DELIGHT

{WALL CLADDINGS}

3D Wall Cladding Inspired by Killim

Inspired by the motifs on Handmade flat-woven rugs, called kilims. These motifs were often combined when woven into patterns on kilims. We have tweaked this form to create our own range of wall claddings.



TILE PATTERN

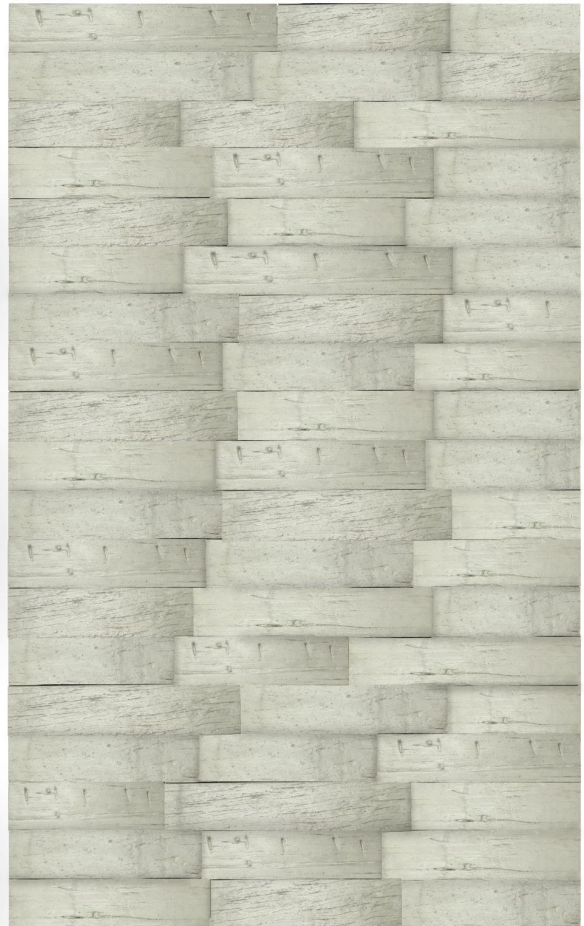
LITROCK EARTHFORM

{WALL CLADDINGS}

A range of cement-based wall claddings and pavers that take on the textures of stone, brick, and wood. Made for both floors and walls, indoors or out. They're durable, weather-resistant, and certified with GreenPro.

Litrock Earthform offers the feel of natural materials - without the cost, labour, or long timelines. No carving, no polishing, no waiting. Just clean, reliable surfaces that do the job well and look good doing it.

For homes, hotels, farmhouses, and buildings that need something solid and grounded, this fits in quietly, and holds its place.



RUSTIQUE



Colours:



Black



Chocolate Brown



Sicilia

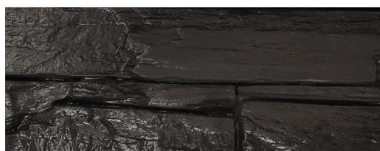


Kotha Green



Grey

Dimensions: 12" X 4.17" , 10" X 4.17" , 8" X 4.13"



ECHO STONE



Colours:



Black



Chocolate Brown



Sicilia

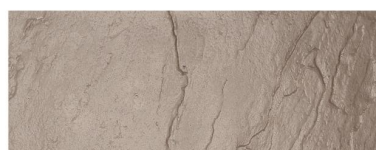
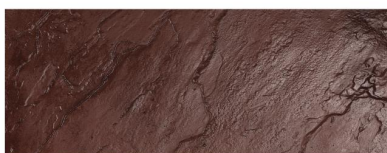
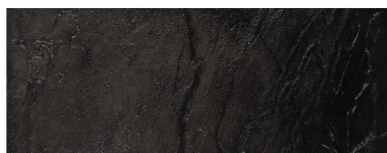


Kotha Green



Grey

Dimensions: 22.63x22.63", 22.44x16.53", 23" X 11", 16.73x16.73" & 11" X 11"



OAKRIDGE



Colours:



Black



Chocolate Brown



Sicilia



Kotha Green



Grey

Dimensions: 22.83" X 9.64"



FOREST PLANK



Colours:



Black



Chocolate Brown



Sicilia



Katha Green



Grey

Dimensions: 23.2" X 5.7"



A CENTURY OF MAKING ARTISANAL TILES

With a reputation dating back for 100 years, Bharat Floorings & Tiles is considered a leader in custom-made cement floorings. Customers have trusted the brand's superior quality and welcomed the company into their daily lives, creating invaluable memories for generations of office and homeowners. Our commitment to handmade has created bespoke and unique products that can serve as cherished family heirlooms for years to come. Our cement tiles are made by hand, one at a time, using mineral pigments. After the tile is casted by the artisan, it is cured in water for a period of time, and then air dried before being shipped.



To create your story, drop into our showroom or visit us online.

We have showrooms located in Mumbai | Delhi | Ahmedabad
| Vadodara | Goa | Bengaluru | Hyderabad | Pune

Bharat Floorings & Tiles (Mumbai) Pvt Ltd.

32, Mumbai Samachar Marg, Next To BSE, Fort, Mumbai 400023

T: +91 22 40574400/23/44 | E: info@bharatfloorings.com

W: www.bharatfloorings.com | bharatfloorings | BharatFloors

ISO 9001: 2015 Certified Company | Brochure Date: August, 2025

